

## wsAP ac lite

The wsAP ac lite is a perfect access point (AP) for hospitality networks (hotels, shopping malls, hospitals, airports etc.). It has an unobtrusive case that fits in standard wall power sockets. This way, the unit doesn't attract attention and blends into any environment.

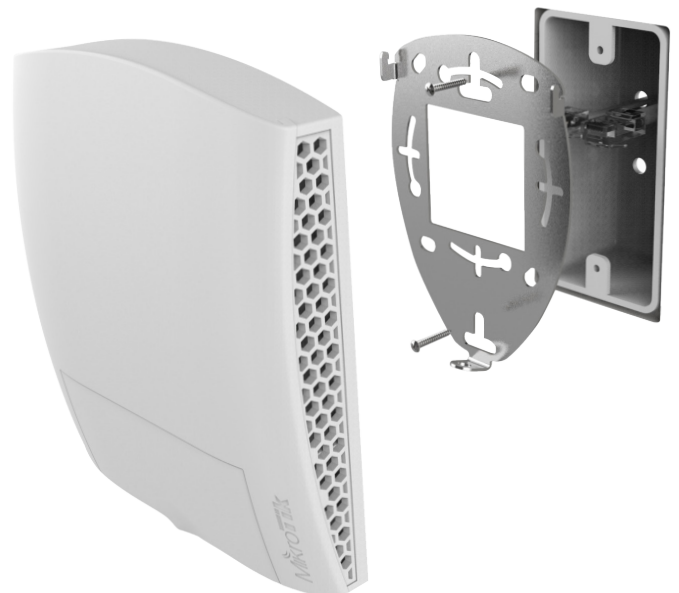


The device also has a pass through telephone jack (RJ11) to connect a desktop phone in a hotel room, for easier cable management. As a separate accessory you can order a special screw set (product code K50), that ensures the bottom door can only be opened by the owner.

Mounting bracket fits US and EU most popular telecommunication sockets.



The wsAP has three Ethernet ports: one on the back side for easy PoE-in, and two LAN ports behind the front door. The device provides Dual concurrent 2.4 GHz and 5 GHz WiFi coverage, it supports 802.11ac, as well as legacy standards. A USB 2.0 port is provided, to charge mobile devices or for storage.



# Specifications

Product code	RBwsAP-5Hac2nD (International) RBwsAP-5Hac2nD-US (USA)			
CPU	QCA9531			
CPU nominal frequency	650 MHz			
Memory	64 MB			
Storage type	Flash			
Storage size	16 MB			
10/100 Ethernet ports	3			
Wireless	2.4 GHz	5 GHz		
Wireless regulations	Specific frequency range may be limited by country regulations			
Operating frequency	International	2412 - 2484 MHz	International	5150 - 5875 MHz
	USA	2412 - 2462 MHz	USA	5170 - 5250 MHz 5725 - 5835 MHz
Protocols	802.11b/g/n		802.11ac	
Number of chains	2		1	
Antenna gain	1.5 dBi		3 dBi	
Power options	PoE-in 802.3af/at, PoE-out passthrough (Ethernet 3), 18-57 V			
Consumption	10 W			
Dimensions	112 x 126 x 30 mm			
Operating temperature	-40°C .. +60°C tested			
LEDs	7x LEDs			
License level	4			
USB	1 USB 2.0, max output current for external devices 500 mA			
Operating system	RouterOS			

## Wireless specifications

Rate (2.4 GHz)	Tx	Rx
1MBit/s	22	-96
11MBit/s	22	-89
6MBit/s	20	-93
54MBit/s	18	-74
MCS0	20	-93
MCS7	16	-71

Rate (5 GHz)	Tx	Rx
6MBit/s	23	-93
54MBit/s	20	-75
MCS0	23	-93
MCS7	19	-71
MCS9	16	-63